

DIVINE DREAMS

Formerly Seventh Heaven

*Fine Antique Beds
Quality Mattresses & Bases
Luxury Bedding & Linen*

2011/2012 EDITION



Contents

Pages 4 to 13	Antique Brass and Iron Beds
Page 14	Bespoke Metal Beds
Pages 15 to 25	Antique Wooden Beds
Pages 26 to 27	Reproduction Wooden Beds
Page 28	Louis XV Style Headboards
Page 29	Bedside Tables
Pages 30 to 35	Mattresses, Bed Bases and Divans
Pages 36 & 37	Duvets and Pillows
Pages 38 & 39	Seventh Heaven Heirloom Linen
Pages 40 to 43	Divine Dreams Cotton Linen
Pages 44 to 45	Luxurious Italian Bed Linen
Pages 46 to 47	Luxurious Cotton Bedspreads
Pages 48 to 49	Patchwork Quilts
Pages 50 to 53	Divine Dreams Bedspread Collection
Page 54	Traditional and Luxurious Blankets
Page 55	Throws and Cushions
Pages 56 & 57	Delivery and Carrier Services
Page 58	Website, E-mail & Mail Order
Page 58	Bed Restoration Service
Page 59	How to Find Divine Dreams



Tel: 01691 777622



Welcome to Divine Dreams

Welcome to new customers of Divine Dreams and former customers of Seventh Heaven. If you have dealt with us before as Seventh Heaven you will already appreciate our fine antique beds, top quality mattresses and luxurious bed linen. We are sure you will remember our excellent customer service from your initial inquiry to the moment your head touched your pillow. However, you may not be aware that Divine Dreams is managed by a team of people who also ran Seventh Heaven. We are still a family business with traditional values of service and quality, and the experience and expertise of our staff is incomparable. Whether it is advice on restoring antique bedsteads, help in sourcing a bed base and mattress, information for odd size and bespoke beds, recommendations for duvets or pillows and suggestions for luxurious bed linen, our depth of knowledge is second to none.

If you have visited our Chirk Mill showrooms before you will know it is a unique shopping experience. Situated in picturesque countryside you can browse at your leisure through three floors of the historic mill and

take a complimentary hot drink in our welcoming atmosphere, while the cats doze in the corner and the chickens and ducks roam outside. Pull back the covers and lie on whichever bed you like, giving yourself as much time as is needed to decide on beds and mattresses. Whether it is for the complete bed, just a mattress or base, or simply a set of pillowcases you are sure to find the selection at Chirk Mill inspirational.

Please use this brochure as a guide as to what is available from Divine Dreams. Our stock of antique beds is continually changing and also much of our range of linen and bed covers has limited availability. That is why we recommend you view our website for up-to-date stock, but of course nothing compares to a trip to Chirk Mill.

We are open 7 days a week from 9am to 5pm Monday to Saturday and 10am to 4pm on Sunday. If you would like to extend your visit we can recommend some excellent Hotels and Bed and Breakfasts in our beautiful locality.

Antique Metal Beds



Antique four poster bed with original paintwork, circa 1870



Extract from an original Victorian bedstead catalogue



The typical condition of an antique brass and iron bed



A decorative original brass and iron bedstead with sunflower brass rosettes, circa 1890



A fine original cast iron day bed with ornate cast plaque, from the early Twentieth century



A handsome brass and iron bedstead with all the original brass work intact, circa 1895

Divine Dreams specialise in sourcing genuine antique brass and iron beds, the majority of which were manufactured in the West Midlands during the Nineteenth and early Twentieth Centuries.

Each year we spend considerable effort tracking down these beds in auction houses in the UK and also abroad. Our forays take us across the continent, around the Mediterranean and into North Africa, to wherever they were originally exported. The beds are brought back to our workshops in Wales, where they are skillfully restored and recycled to give a new lease of life.

We are always searching for bedsteads, which are in as much of their original condition as possible and we do find some with very few signs of age. A selection of these beds is always on display in Chirk Mill and on our website. If customers prefer we can supply these beds with as little restoration as possible or with the repairs and renovation hidden so that as much of the authenticity of the bed is retained.

However, most of our finds do require substantial attention in order for them to be functional. Many of these beds have a colourful history, often having been neglected for many years and sometimes being used to fill gaps in farmers' hedges. Very often these beds have damaged or missing parts, which is particularly important if it affects the bed's structure. At Divine Dreams we have the ability to re-forge missing castings and replace damaged brass. In our dedicated foundry we use the same techniques employed by the original bed makers over 100 years ago, using recycled materials where possible.

In the same way, we extend and adapt the original antique frames to the modern wider sizes of 5ft, 5ft 6in. and 6ft, often using re-forged castings. Special attention is paid to the structure of the bed, ensuring it stands rigid and meets the demands of a quality bed base and mattress.

The end result is a range of fabulous bedsteads with a unique history and a style of their own. These beds were originally built to last, and with love and care they will last for generations to come.

Bed Restoration Service

If you already have your own antique bedstead requiring our standard of restoration, please turn to page 58.



A fine example of a 5ft wide bedstead finished in powder coat cream.
Price Guide: £995 to £1,295 inc VAT

The Brass Decoration

With many bedsteads, we can offer a selection of brass knobs. Still the firm favourite is the spherical design, but often beds may suit more elaborate styles.

Most of our brass is highly polished before it arrives in the showroom or delivered to your home. In time, the lustre mellows to an aged look. Many people prefer to keep that appearance. Alternatively you can restore the sheen by treating the brass every so often with an impregnated cleaning compound.



An alternative treatment is to paint the brass in the same colour as the bed, as above in cream (a) and blue verdigris (b). Another option is to artificially hand age the brass, as shown in (c), which is particularly suitable for antique cast iron beds.

The Colour Choice

At Divine Dreams we are constantly increasing our range of colours for our beds. The current choice includes our robust powder coat colours of traditional cream, black and antique white, and also our range of hand-paint finishes.

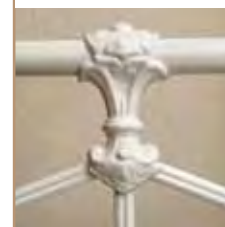
Powder Coat Cream



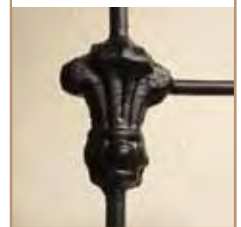
Powder Coat Black



Antique White



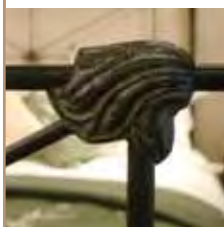
Matt Black



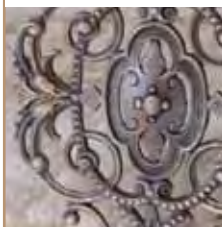
Mink



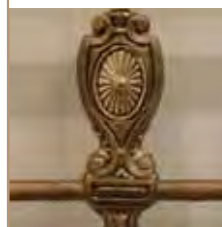
Charcoal



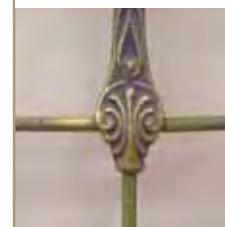
Blue Verdigris



Antique Gold



Green Verdigris



Caramel



The Classic Style Antique Bed



2

6

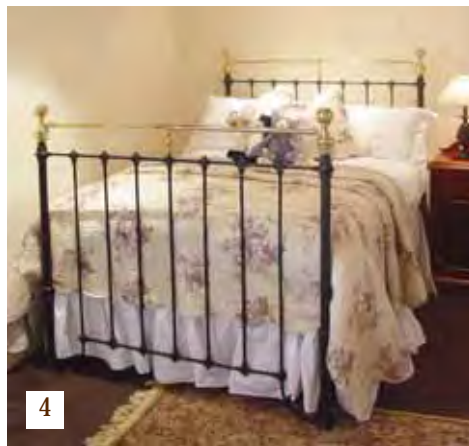


1

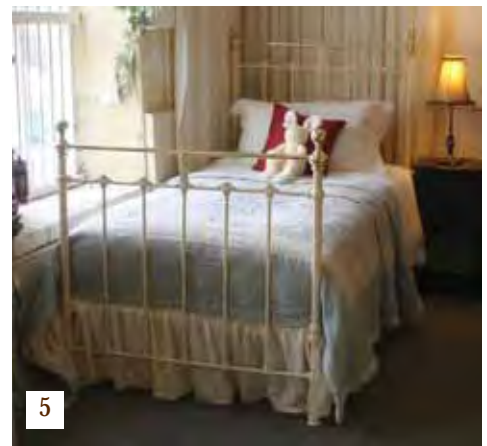
Tel: 01691 777622



3



4



5

These brass and iron bedsteads are timeless classics, which fit into both traditional and modern homes.

At Divine Dreams you will find all widths of classic beds, from single through to super king and in all designs from the simple and understated to the ornate and elaborate.

For a selection of our current beds please enquire by phone or by e-mail, or look at our website www.divinedreams.co.uk.

Picture 1 A 5ft wide, king size bed finished in cream with china porcelain decoration, adapted and extended from an original bed, circa 1890.
Price Guide: £1,295

Picture 2 A 5ft wide, king size bed finished in blue verdigris with a curved brass top rail, adapted and extended from an original bed, circa 1900.
Price Guide: £995

Picture 3 A 5ft wide, king size bed in cream with curved brass top rails, adapted and extended from an original bed, circa 1890.
Price Guide: £895 to £995

Picture 4 A 4ft 6in. wide, standard double bed in black, circa 1900.
Price Guide: From £795 to £895

Picture 5 A 3ft 6in wide, large single bed in cream, ideal for a guest room or growing child, circa 1890.
Price Guide: £645 to £895

Picture 6 A 5ft wide, brass and iron bedstead finished in antique gold, circa 1895.
Price Guide: From £845 to £995

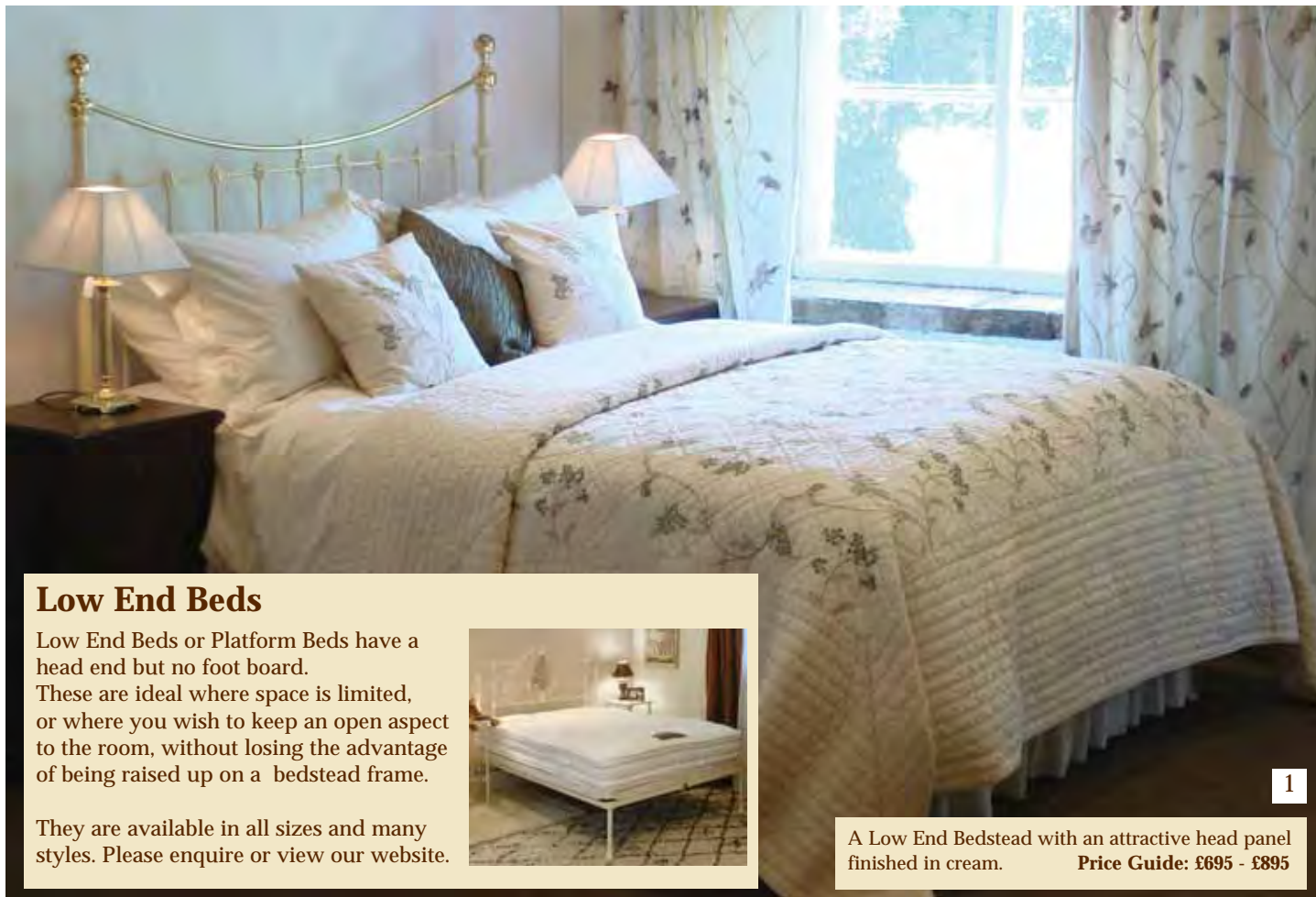
Picture 7 A 5ft wide, king size decorative bed in black, circa 1890.
Price Guide: £1,295 to £1,795



6



7



Low End Beds

Low End Beds or Platform Beds have a head end but no foot board. These are ideal where space is limited, or where you wish to keep an open aspect to the room, without losing the advantage of being raised up on a bedstead frame.

They are available in all sizes and many styles. Please enquire or view our website.



A Low End Bedstead with an attractive head panel finished in cream. **Price Guide: £695 - £895**

1

Picture 2 A 5ft wide, king size bed in cream with art nouveau decoration, adapted and extended from an original bed, circa 1890. **Price Guide: £995**

Picture 3 A 6ft wide, super king size bed in black, adapted and extended from an original Victorian bed, circa 1890. **Price Guide: From £1,695 to £1,895**

Picture 4 A 5ft wide, king size bed in blue verdigris, adapted from an original bed, circa 1890. **Price Guide: £995**

Picture 5 A matching pair of black Victorian beds circa 1895. Matching pairs of beds are becoming increasingly rare. **Price Guide for Pair: From £1,595 to £1,895**



2



Picture 6 A super king size bedstead, 6ft wide with attractive brass decoration, finished in cream. Adapted from an original Victorian bed, circa 1890.
Price Guide: £1,995 - £2,250



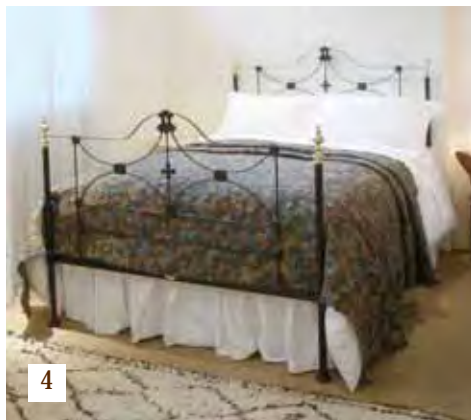
1



2



3



4



5

Picture 1 A 6ft wide, super king size bed adapted and extended from an original mid-Victorian bed, circa 1880. **Price Guide: From £2,250 to £2,795**

Picture 2 A 4ft wide, small double, cast iron bed in cream, circa 1890. **Price Guide: From £695 to £995**

Picture 3 A single day bed in cream, circa 1910. **Price Guide: From £695 to £995**

Picture 4 A 5ft wide, king size bed in black, circa 1875. **Price Guide: From £1,095 to £1,295**

Picture 5 A 3ft wide, single bed in cream with arch design, circa 1875. **Price Guide: From £695 to £895**

Picture 6 A 5ft wide, king size cast iron bed in a rare three hoop design Circa 1885. **Price Guide: From £1,795 to £1,895**



6

The Original Cast Iron Bed

Before large scale bed production in the late Nineteenth Century, metal beds were all hand forged and as industry developed, the first beds were copies of these hand forged designs. Later this style was developed for export around the world and these beds often found their way to exotic locations.

The shapes of these Mid-Victorian beds were often inspired by nature and the castings very often incorporated flowers, shells and even fossils. Their curvaceous style is in contrast to the classical brass and iron bed and, having minimum of brass, these beds are very popular in contemporary bedrooms.



Picture 7 A king size cast iron bedstead, 5ft wide with attractive panels in a scroll design and brass finials on the posts, finished in cream. Adapted from an original Mid-Victorian bed, circa 1880.
Price Guide: £1,595

Iron Four Poster & Half Tester Beds

These magnificent beds were originally designed in the Victorian era. As the export of cast iron beds developed, the canopy structures of the four poster and half tester beds were ideal for suspending mosquito nets. Nowadays, you can lightly drape these with muslin or a voile for a romantic effect, or even leave the bed undraped in its skeletal form for a more contemporary look.

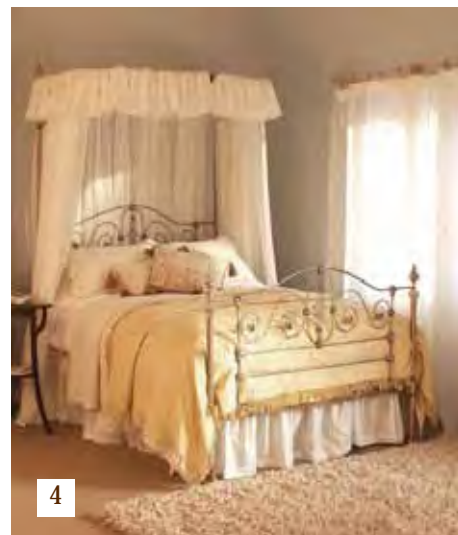
Picture 1 A 5ft wide, king size four poster bed in blue verdigris with full muslin drapes. Circa 1870. **Price Guide: £2,250 to £2,450**

Picture 2 A 5ft wide, king size four poster bed in black with muslin drapes over an arched canopy. Circa 1875. **Price Guide: £2,250 to £2,450**

Picture 3 A 3ft wide, single four poster bed in antique gold. Circa 1875. **Price Guide: £995 to £1,450**

Picture 4 A 5ft wide, king size half tester bed in antique gold with voile drapes. Circa 1880. **Price Guide: £2,250 to £2,450**

For prices of drapes for four poster and half tester beds please enquire.



All Brass Beds

Brass beds were the ultimate in luxury in their time, reflecting the flamboyant style of the late Victorian period.

As an alternative to rare original brass beds we also reconstruct brass beds to any width using original brass posts. These have new panel decoration, faithfully copied from the original designs, as the bed shows in Picture 3.



Picture 1 A superb 5ft wide, king size, all brass four poster bedstead with highly ornate panels and Crown and Canopy. These beds are very rare to find, but through our unique sources we often discover some beautiful examples, such as the one shown. Circa 1875. **Price Guide: £7,995 to £9,995**

Picture 2 A 5ft wide, king size, all brass bedstead with serpentine top rail and ornate decoration. Circa 1875. **Price Guide: £2,450 to £2,950**

Picture 3 A 5ft wide, king size, all brass bedstead with original Victorian posts and reconstructed central panels. We use this classical design to create beds up to 6ft wide, super king size. **Price Guide: £2,450 to £2,950**



The Divine Dreams Bespoke Collection

Hand Crafted Limited Designs

Our bespoke bedstead range has been developed using our considerable experience in the designs of antique beds. Using the traditional methods of casting and forging with steel, iron and brass we are able to create unique pieces of furniture from simple daybeds to fabulous crown and canopy four posters. These are limited editions designed specifically to your requirements.

These photographs show examples of beds we have created in our bespoke collection. There are many more possibilities than we can show here and we can adapt the designs to suit your needs. Everything including the height, width, length and colour is your choice, and all sizes of matching bases, mattresses and linen are also possible.



A stunning 5ft Wide king size cast iron bed in terracotta with elaborate brass castings inspired by a bedstead discovered in the city of Tangier, Morocco.

Price Guides: 5ft Width - £2,250

6ft Width - £2,750



A cast iron platform bed with attractive head panel and central sunflower brass plaque. These platform beds can be made in any size in a large variety of styles. **Price Guides:**

4ft 6in: £995 - £1,195 5ft: £1,295 - £1,595 6ft: £1,695 - £1,895



A large variety of single bed styles are available. These can be made as matching pairs or even as platform beds.

Please enquire for exact prices.

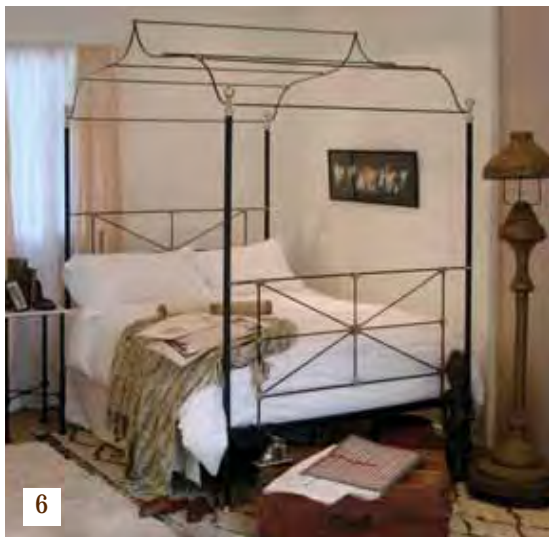


Metal day beds are an excellent idea where you wish to make use of a room both in the day time and as an occasional bedroom. Many styles can be made to any width. **Please enquire for exact prices.**



An alternative to the divan is the low frame bed, which has no foot panel or head panel, with full storage facility underneath.

Please enquire for exact prices.



6

A campaign four poster bed inspired by an original Victorian design, also available as a normal bed. An advantage of this design is the ability to completely dismantle the bedstead, which is ideal where access is difficult.

Price Guide: £1,995 to £2,450



7

A half tester bed finished in blue verdigris. Many styles are available as half tester beds up to super king size, 6ft wide.

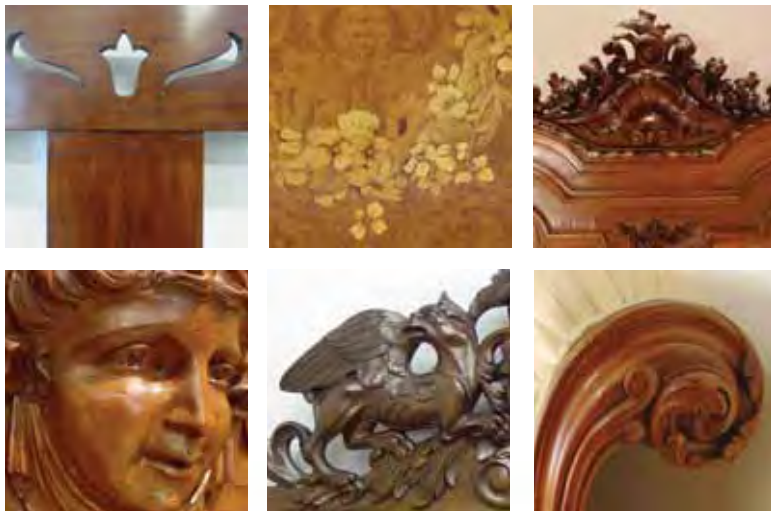
Price Guide: £1,995 to £2,450



8

A stunning four poster bedstead with crown and canopy created in the super king size, 6ft width. This style can also be in the 5ft width.

Price Guides: 5ft Width - £2,750 6ft Width - £2,950



The Charm of Antique Wooden Bedsteads

The appeal and charm of antique wooden beds is timeless. The original craftsmen carefully chose their wood and showed off their individual skills with fine carvings, delicate inlay work and veneer application. Each workshop developed its own style influenced by both local custom and changing fashion. This has created a wealth of styles, with each bed having its own unique history. It could be said that each one is a work of art.

We constantly search for wooden beds, sourcing them worldwide. In our workshops in Wales, the beds are brought back to life by our team of experienced restorers. Special attention is placed on the structure of the beds, ensuring they stand rigid and sturdy when assembled. Many beds are adapted to accept the modern size mattresses. In other cases where an odd size is required we make the mattresses and bases to measure.

Bed Restoration Service

Do you already have an antique bed of your own, which has seen better days? Why not have it restored by Divine Dreams? We can repair, refinish, lengthen and restructure beds, making them suitable for modern mattresses and bases. Please see page 58.



Antique Wooden Beds



Picture 1 A superb example of a Renaissance style bedstead in walnut with fabulous carving, circa 1895.
5ft Wide, King Size
Price Guide: £1,895 to £2,795

Country, Classical and Arts and Crafts

Antique wooden beds in simple styles, with basic forms and lines are versatile pieces.

They fit in many bedroom settings, from the traditional to the contemporary. Predominantly crafted in the first half of the Twentieth Century, these classical designs were a welcome change from the highly decorative fashion of the late Victorian era.



Picture 1 Country style walnut bed with spindle decoration. Circa 1910.
Price Guide: £795 - £995

Picture 2 An unusual matching pair of spindle beds in walnut, circa 1920.
Price Guide: £995 - £1,295

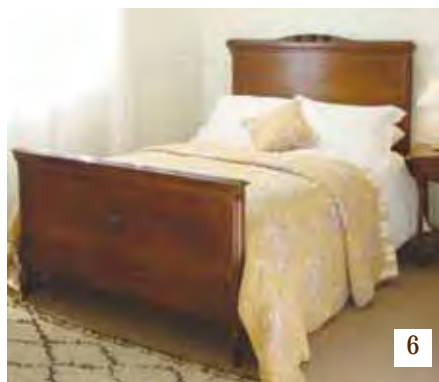
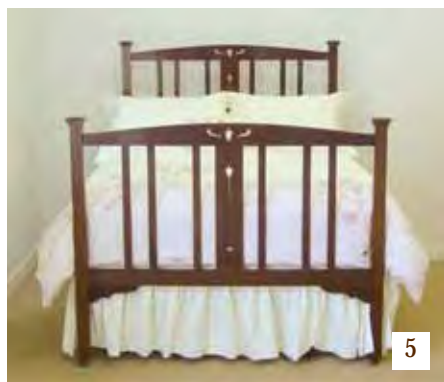
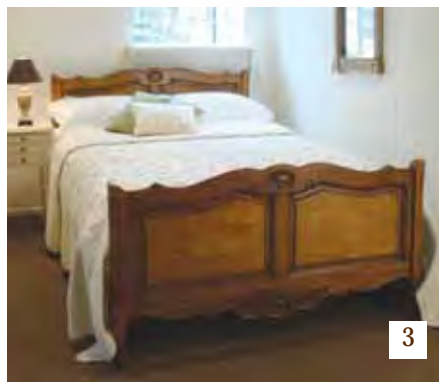
Picture 3 A walnut bedstead with shaped panels from Normandy, circa 1900.
Price Guide: £895 - £1,295

Picture 4 A classical English slatted bed in mahogany, circa 1920.
Price Guide: £795 - £1,295

Picture 5 Arts & Crafts style bed in mahogany, circa 1910.
Price Guide: £695 - £995

Picture 6 An Edwardian bed with a touch of decoration in mahogany, circa 1900.
Price Guide: £995 - £1,495

Picture 7 A Queen Anne style bed, circa 1930.
Price Guide: £495 - £895





1

Picture 1 A simple example of a Louis XV style bed with upholstered panels.

Price Guide: £995 - £1,295

Picture 2 A classic example of a Louis XV style bed in walnut with quartered veneer panels

Price Guide: £995 - £1,595

The drapes and wooden corona can also be purchased. Please enquire.

Picture 3 A roule ended bed with upholstered panels.

Price Guide: £1,695 - £1,995

Picture 4 A Louis XV style bed in walnut with decorative motif on the footboard.

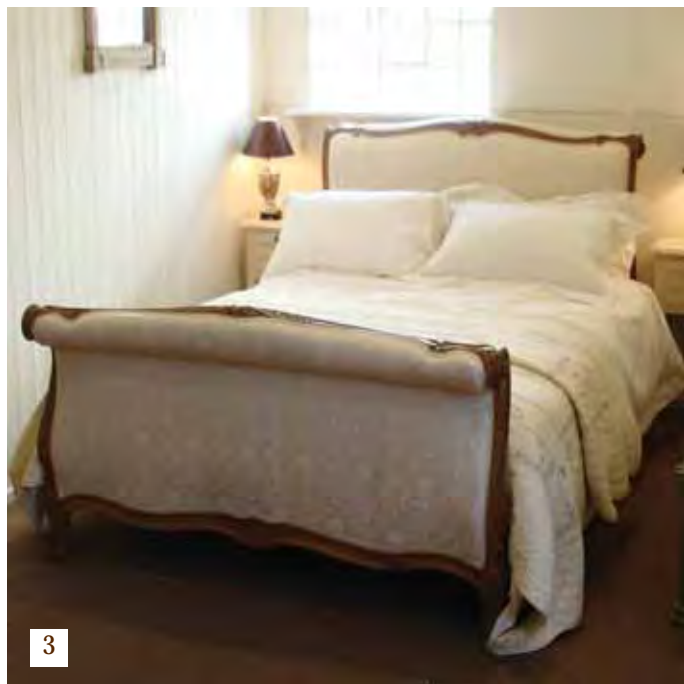
Price Guide: £1,295 - £1,950

Picture 5 A roule ended daybed with upholstered panels.

Price Guide: £1,295 - £1,795



2



3

Louis XV Style Beds

The Louis XV style, circa 1890 to 1910, is influenced by the Rococo style, with curved frames and ornate asymmetric carving.



Art Deco, Louis XVI & Renaissance Styles

Decorative wooden beds provide a stunning focal point to the room, with grandiose designs incorporating ornate carvings, intricate inlay work, column posts and detailed pediments.



Picture 1

Fabulous mahogany Art Deco bedstead with burr walnut veneer and fine inlay. Circa 1920.

Price Guide: £1,595 - £1,895

Picture 2

A superb Art Deco mahogany bedstead with fine inlay, circa 1925.

Price Guide: £1,795 - £2,250

Picture 3

Oak Breton bedstead with superbly carved panels, Circa 1920.

Price Guide: £1,595 - £1,995

Picture 4

A Louis XVI style upholstered bedstead with painted framework. Circa 1890.

Price Guide: £895 - £1,595

Picture 5

A simple Renaissance style bedstead in walnut. Circa 1890.

Price Guide: £895 - £1,595



3



4



5



1



2



3



4

Wooden Four Poster and Half Tester Beds

There is nothing as grand as a wooden four poster or half tester bed. Historically these were once regarded as a symbol of the owner's status and nowadays they certainly make a statement in the bedroom.

Picture 1 A 5ft 6in wide William IV four poster bed in mahogany, circa 1830. **Price Guide: £8,950**

Picture 2 A 5ft wide Victorian half tester bed with serpentine footboard and barley twist posts, circa 1870. **Price Guide: £3,950 - £5,950**

Picture 3 A 5ft wide Victorian half tester bed in mahogany, circa 1880. **Price Guide: £3,950 - £5,950**

Picture 4 and Picture 5 5ft wide four poster bedsteads reconstructed by Divine Dreams around original front posts.

Picture 4 shows some handsome mahogany Victorian posts from around 1860.

Picture 5 shows a superb set of Regency posts from the early 19th Century.

Divine Dreams specialise in these four poster beds and we have a number of these post sets with which we can construct similar beds up to 6ft wide.

Price Guide: £4,950 - £6,950

At Divine Dreams we are also able to construct four poster beds around customers' own antique bed posts. Please enquire.



Divine Dreams Reproduction Wooden Beds



1

The Versailles Bed

A rattan bedstead with curved footboard, finished in hand paint cream. This bed is available in widths up to super king size.

Size	3ft Wide Single	4ft 6in Wide Standard Double	5ft Wide King Size	6ft Wide Super King Size
Price	1,395.00	1,695.00	1,795.00	2,095.00

The Versailles Cream Dressing Table
Price: £1,095.00

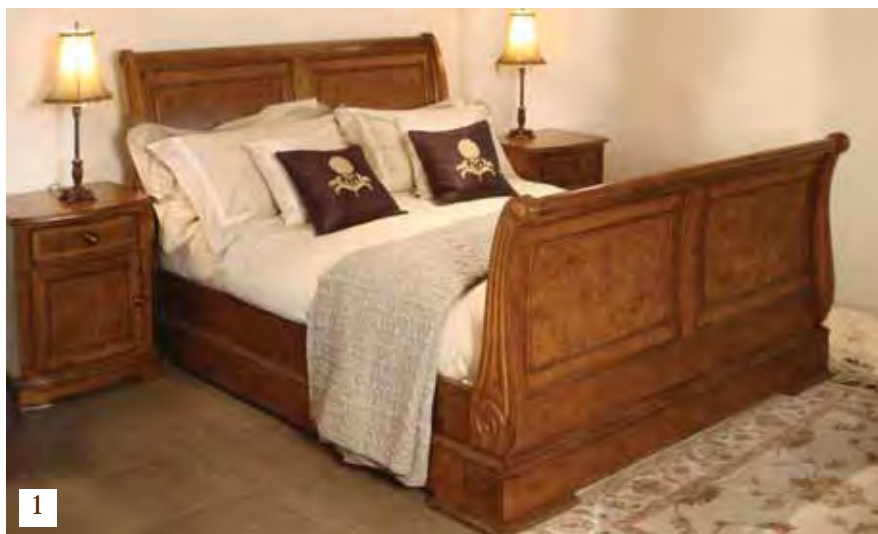
Cream Chair in Photograph
Price: £595.00
 (Plus upholstery & fabric)



Cream Rattan Stool
Price: £445.00



For the Versailles Bedside Tables please see page 29.



1

A fine quality lit bateau style bedstead with ash and poppy oak veneers. Matching furniture is available. For matching Bedside Tables please see page 29

Size	5ft Wide King Size	6ft Wide Super King Size
Bed Price	2,150.00	2,400.00
Low End	1,995.00	2,250.00

The Lit Bateau

with matching furniture



The Low End Lit Bateau



The Silver Rattan

with matching furniture



For matching Bedside Tables see page 29



2

Inspired by French opulence, this hand crafted bedstead with cane panels and fine carving is finished in "silver leaf". Also available in "antique ivory" and "ebony".

Size	5ft Wide King Size	6ft Wide Super King
Bed Price	2,150.00	2,400.00

Louis XV Style Headboards

Our Louis XV style reproduction headboards are perfect to give a traditional look with a divan set. They either have rattan cane or upholstered panels, which can be covered in a fabric of your choice, and are available in Single, Double, King Size and Super King Size.

The finishes we provide are stained mahogany (picture 1), hand paint cream (picture 2), hand paint gold (picture 3). Alternatively, we can paint the frames in a colour of your choice to complement your room.

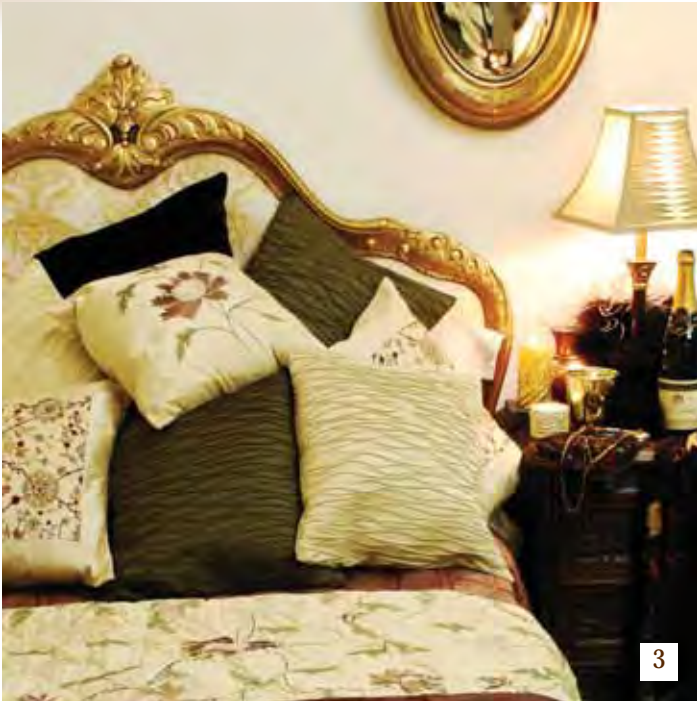
The headboard is free-standing and can be attached to the wall or the divan base.



1



2



3

Size	3ft Wide Single		5ft Wide King Size	6ft Wide Super King
Rattan Cane Panels	£545		£625	£675
Upholstered Panel*	£625*		£745*	£795*

*This does not include the cost of the actual fabric. Please allow approx. 2 to 3 m.

Picture 1 A pair of mahogany bedside cabinets with carved doors (available with pediment or without).

Height - 29 inches (74cm) **Price per table: £425.00**

Picture 2 A mahogany stained bedside cabinet with plain doors (available with pediment or without).

Height - 29 inches (74cm) **Price per table: £395.00**

Picture 3 A matching pair of stained mahogany Louis XV style cabinets. Height - 28in. (71cm) **Price per table: £395.00**

Picture 4 A matching pair of "Versailles" hand painted delicate Louis XV style bedside cabinets.

Height - 29 inches (74cm) **Price per table: £325.00**

Picture 5 A pair of oak bedside cabinets, locally made in Wales.

Height - 29 inches (74cm) **Price per table: £595.00**

Wooden Bedside Tables

A range of reproduction wooden bedside tables available in natural woods and in cream.



Bespoke Metal Bedside Tables



Cream table with white marble



Black table with cream marble

Divine Dreams have developed a range of handmade metal tables, which are perfectly suited to our metal beds.

They can be finished in any of our standard colours or in a colour of your choice.

The heights are normally 30in. or 76cm, but they can be made to measure. The marble tops come in cream or white.

Price per table: £325.00



A three drawer bedside table in pippy oak, matching the Lit Bateau bed and furniture on p.25.

Price per table: £695.00

Height - 27 inches (69cm)

This is also available as a night stand, as shown on page 25.

Price per table: £625.00

Height - 27 inches (69cm)



A two drawer bedside cabinet in mahogany with silver leaf, matching the Silver Rattan bed and furniture on page 25.

Height - 26 inches (65cm)

Price per table: £625.00

Mattresses, Bed Bases & Divans



Your mattress and base choice is probably the single most important aspect in guaranteeing a comfortable night's sleep for years to come.

At Divine Dreams we are of the firm belief that the decision should not be rushed. We are renowned for our informal yet informative approach in the relaxed atmosphere of Chirk Mill, where you can take your time stretching out on our unrivalled range of top quality mattresses and bases.

Tips for choosing your mattress and base combination.

1. Decide whether you prefer firm, medium or soft support.
2. Consider the widest size possible bed, room dimensions permitting, for maximum comfort.
For the taller person, we are able to provide beds of any length, so you can stretch out.
3. Ideally, select your mattress and bed base as a combination, to ensure you select the correct comfort feel.
4. When choosing your mattress and base, adopt your normal sleeping position with your usual number of pillows.
5. Insert your hand between the small of your back and the mattress. If the hand fits easily, with little resistance but no major gaps, then the mattress is supporting your back correctly.
6. Next, lie on your side to ensure that it is comfortable for your shoulders and hips, and that you are able to turn easily from one side to another.



The Relaxed Approach at Chirk Mill



Take your time and relax, spending as much time as you need in the charming setting of Chirk Mill. Put your feet up, and perhaps take a sip from a complementary drink, while you consider the choices.

At Divine Dreams we have selected a comprehensive range of mattresses and bases, with the highest specifications, to give you the best choice possible. The entire range is on display at Chirk Mill on our 30 assembled and dressed beds allowing you to choose at leisure.

These days the complete choice of mattresses, bed bases and divans can be baffling. We are here to guide you, so that you make an informed decision.

We always recommend a trip to Chirk Mill if you are able to. However, if you would prefer to buy mail order, over the phone or by e-mail we have the experience to recommend a mattress to suit your needs.

Are you looking for a mattress and bed base with a special size, shape or needing cut-outs on the corners? Perhaps you have an antique bed that will not accept a standard size. Or maybe you need an unusual size mattress or base for a mobile home, caravan or boat. At Divine Dreams we cater for all these requirements, providing top quality mattresses and bases for every circumstance.

Bed Bases

Bed bases are designed to support the mattress on the bedstead frame and are the modern equivalent of the old spring frames. The combination of bed base and mattress provides the overall comfort feel

of the bed and it is the depth of the base that governs the total height to the top of the mattress.

All our bed bases are made to the highest specifications. They are covered in a high quality fabric, are made strong enough to support the heaviest mattress on the widest of beds and are perforated to allow the

mattress to breathe. Opting for a quality bed base will help to protect the life of the mattress.

The bed base simply sits on the bedstead frame underneath the mattress, with blocks on the underside to prevent it from slipping.

Our bed bases come in two types, firm or sprung.



The *firm bed base* has a solid ventilated top, which provides a firm support. Standard base depths begin at 1½ inches but can be any depth required. It is the depth of the base that governs the overall height of the mattress top. A special ¾” shallow base is also available.



The *sprung bed base* has a spring unit with a firm supportive edge. This base provides a more forgiving comfort feel when combined with a mattress. Depths begin at 4 inches (to allow for the spring unit) and can be more if needed.



The normal ticking for bases is the neutral damask shown, which matches one range of our mattresses. Bases can be covered in some other matching mattress ticking, or a traditional black and white stripe if required. A valance or bed base cover can be used to hide the base from view (pg 38).

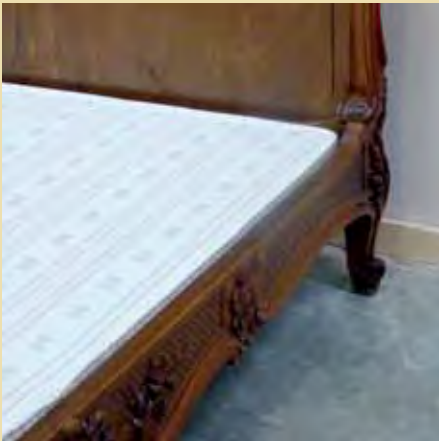
Bed Base Prices

Single bed bases come in one piece. 4ft or wider bed bases come either folded across the width or in two separate halves for ease of access.

		Std Single	Lge Single	Sm. Double	Std Double	King Size	Extra-Wide	Super-King
		3’0” x 6’3”	3’6” x 6’3”	4’0” x 6’3”	4’6” x 6’3”	5’0” x 6’6”	5’6” x 6’6”	6’0” x 6’6”
		90x190cm	110x190cm	120x190cm	135x190cm	150x200cm	165x200cm	180x200cm
	Depth	Base in one single piece			Base either folding across the width or in two pieces with link bars			
Firm, Standard Base	1½” 3” 4”	145.00	165.00	210.00	210.00	240.00	265.00	295.00
Firm, Special Shallow Base	¾”	180.00	195.00	280.00	280.00	295.00	325.00	395.00
Firm, Deeper Base	6” 8”	165.00	185.00	245.00	245.00	275.00	300.00	325.00
Sprung, Standard Base	4”	175.00	195.00	255.00	255.00	280.00	310.00	340.00
Sprung, Deeper Base	6” 8”	185.00	210.00	280.00	280.00	310.00	340.00	375.00

Cut-Out Corners, Odd Shapes & Insets

Divine Dreams specialise in adapting antique bedsteads to the standard modern sizes of bed base and mattress. However many antique beds do not conform to modern dimensions and in these cases it is better to provide a base and mattress that fits exactly. The bed may require cut-out corners around posts, curved edges for a bow front or be made to fit within the original side runners. We have the expertise to provide the perfect shaped base and mattress in these circumstances.



Divan Bases

Divan Bases are the modern alternative to a bedstead frame. They are ideal where space is limited or an open aspect is preferable. Castors are standard but legs are also an option (as shown in inset). There are many options for drawers within the divan base. These are really only suitable for firm divans because in sprung bases the spring units take a large proportion of the depth. The drawers can be in several configurations, on the side and on the end.



One option is the Continental Drawer configuration with small storage drawers on both sides of the base near the head, allowing space for a bedside table and large storage drawers either side at the foot end of the bed.
**The price of the drawers are:
£30 each inc VAT.**

Divan Base Prices

Single divan bases come in one piece. 4ft or wider divan bases come in two separate halves for ease of access.

		Std Single	Lge Single	Sm. Double	Std Double	King Size	Extra-Wide	Super-King
		3'0" x 6'3"	3'6" x 6'3"	4'0" x 6'3"	4'6" x 6'3"	5'0" x 6'6"	5'6" x 6'6"	6'0" x 6'6"
	Depth	90x190cm	110x190cm	120x190cm	135x190cm	150x200cm	165x200cm	180x200cm
Firm	14", 16", 18" inc. 2" castor	160.00	175.00	245.00	245.00	275.00	300.00	335.00
Sprung	14", 16", 18" inc. 2" castor	195.00	215.00	295.00	295.00	330.00	365.00	395.00

Open Coil Mattresses

The traditional open coil mattress is still a favourite for many. Although they are often seen as a more affordable option, these mattresses are made to the highest specifications and are extremely durable.

As well as being suitable for the master bed, open coil mattresses are ideal for guest and childrens bedrooms. An open coil mattress contains a lattice work of individual helical springs, which are joined together to create a linked structure.

As with our pocket sprung mattresses this range comes with a variety of fillings including cotton and wool to give added comfort . Open Coil Mattresses should be turned periodically.

Open Coil Mattress Price List

			Std Single	Lge Single	Sm. Double	Std Double	King Size	Extra-Wide	Super-King
			3'0" x 6'3"	3'6" x 6'3"	4'0" x 6'3"	4'6" x 6'3"	5'0" x 6'6"	5'6" x 6'6"	6'0" x 6'6"
	Feel	Depth	90x190cm	110x190cm	120x190cm	135x190cm	150x200cm	165x200cm	180x200cm
Shropshire Available in Medium or Firm Feel.	Medium or Firm	9"	145.00	170.00	220.00	220.00	250.00	315.00	340.00
Regency or Victoria Medium (Regency) or Firm (Victoria) 325 Springs* Bonded Cotton Filling	Medium or Firm	10 ¹ / ₂ "	255.00	280.00	360.00	360.00	405.00	445.00	495.00
Kensington Medium Feel, Wool Filling, 325 Springs* Special Edge Supports.	Medium	9 1/2"	350.00	390.00	475.00	475.00	545.00	595.00	645.00

Pocket Sprung Mattresses

Pocket sprung mattresses are the most popular form of mattress for the master bedroom in this country. The construction consists of individually pocketed springs contained within calico cylinders, which are allowed to compress and expand

independently from each other. Roll together is minimised as each pocket responds separately to the weight and position of your body, so you and your partner can enjoy a sound sleep. These top quality hand-crafted mattresses are all manufactured in the UK to our own specifications using the highest quality materials. Wherever possible natural fillings are used including lambswool,

cashmere and cotton felt. Some mattresses combine the traditional craftsmanship of the pocket spring system with the latest technologies of memory foam and reflex foam. Although it is advisable to periodically turn most of these mattresses, some do not require this. These mattresses are identified as **No Need To Turn**.

Pocket Sprung Mattress Price List

			Std Single	Lge Single	Sm. Double	Std Double	King Size	Extra-Wide	Super-King
			3'0" x 6'3"	3'6" x 6'3"	4'0" x 6'3"	4'6" x 6'3"	5'0" x 6'6"	5'6" x 6'6"	6'0" x 6'6"
	Feel	Depth	90x190cm	110x190cm	120x190cm	135x190cm	150x200cm	165x200cm	180x200cm
Jacobean Supaloft Filling, 1200, Springs* Turn Periodically	Firm	10"	425.00	465.00	555.00	555.00	630.00	695.00	765.00
Byron Coir Fibre & Reband Polyester Filling 1500 Springs*. Turn Periodically	Firm	10"	535.00	585.00	655.00	655.00	695.00	795.00	955.00

Pocket Sprung Mattress Price List			Std Single	Lge Single	Sm. Double	Std Double	King Size	Extra-Wide	Super-King
			3'0" x 6'3"	3'6" x 6'3"	4'0" x 6'3"	4'6" x 6'3"	5'0" x 6'6"	5'6" x 6'6"	6'0" x 6'6"
			90x190cm	110x190cm	120x190cm	135x190cm	150x200cm	165x200cm	180x200cm
Wordsworth No Need to Turn Firm Luxurious Comfort Feel with Excellent Support. 1480 Springs*	Luxury Firm	11"	655.00	745.00	845.00	845.00	995.00	1,095.00	1,295.00
Anglesey No Need to Turn Pure Cotton Felt, Lambswool, Reflex Foam. 1250 Springs*	Medium /Firm	10"	595.00	695.00	735.00	735.00	865.00	985.00	1,055.00
Premier Cotton Felt and Lambswool Filling 1500 Springs*. Turn Periodically	Medium /Firm	11"	565.00	625.00	825.00	825.00	975.00	1,075.00	1,175.00
Brecon No Need to Turn Lambs Wool, Cotton Felt and Viscoelastic 1600 Springs*	Medium /Firm	11"	755.00	935.00	935.00	935.00	1,095.00	1,195.00	1,335.00
Anglesey Supreme No Need to Turn Pure Cotton Felt, Lambswool, Memory foam, 1630 Springs	Luxury Medium /Firm	11"	935.00	1,045.00	1,045.00	1,045.00	1,195.00	1,325.00	1,345.00
Renaissance Supaloft Filling. 1200 Springs* Turn Periodically	Medium	10"	425.00	465.00	555.00	555.00	630.00	695.00	765.00
Keats Hessian & Reband Polyester Filling 1500 Springs*. Turn Periodically	Medium	10"	570.00	625.00	695.00	695.00	735.00	820.00	985.00
Balmoral Cashmere, Wool & Curled Hair, 2000 Springs*. Turn Periodically	Luxury Medium	11"	885.00	995.00	1,295.00	1,295.00	1,495.00	1,845.00	1,945.00
Sovereign Lambswool, Cotton Felt & Cashmere 2432 Springs*. Turn Seasonally.	Luxury Medium	10"	1,555.00	1,935.00	1,935.00	1,935.00	2,250.00	2,550.00	2,595.00
Ceiriog No Need to Turn Lambswool and Cotton Felt, 850 Springs*	Medium /Soft	11"	395.00	N/A	445.00	445.00	595.00	N/A	825.00
Berwyn No Need to Turn Lambswool, Cotton Felt & Reflex Foam Over 1200 Springs*	Medium /Soft	10 1/2"	595.00	765.00	765.00	765.00	925.00	1,035.00	1,095.00
Shelley No Need to Turn Unique Air Sprung System, Natural Fillings inc. Lambswool , 3000 Springs*	Soft / Medium	10"	935.00	1,035.00	1,295.00	1,295.00	1,450.00	1,620.00	1,750.00

* Spring counts are given for the 5ft by 6ft 6in (150x200cm) size mattresses

As the mattresses are all handmade, the sizes are approximate and may vary. Prices, specifications and ticking are subject to change and availability.

Luxurious Duvets

Home Range by Surrey Down - Special Dustmite Protection

		Tog	Single 135 x 200cm	Double 200 x 200cm	King 230 x 220cm	SuperKing 260 x 220cm
Mid-Season	White Goose Feather & Down (85% Feather, 15% Down)	10.5	75.00	99.00	125.00	140.00
Winter	White Goose Feather & Down (85% Feather, 15% Down)	13.5	85.00	110.00	135.00	150.00
Summer	White Goose Down (80% Down, 20% Feather)	6	95.00	130.00	160.00	180.00
Mid-Season	White Goose Down (80% Down, 20% Feather)	10.5	155.00	210.00	265.00	299.00
Winter	White Goose Down (80% Down, 20% Feather)	12	165.00	230.00	290.00	320.00
Winter	White Goose Down (80% Down, 20% Feather)	13.5	180.00	245.00	315.00	350.00

Premier Range by Surrey Down - Special Dustmite Protection

Surrey Down are also able to custom-make sizes of duvets, for example at 290 x 230cm - please enquire.

Summer	Hungarian White Goose Down (90% Down, 10% Feather)	6	205.00	295.00	355.00	399.00
Mid-Season	Hungarian White Goose Down (90% Down, 10% Feather)	12	255.00	370.00	450.00	510.00
All Seasons	Hungarian White Goose Down (90% Down, 10% Feather)	9+ 4.5	345.00	489.00	588.00	666.00
Light Summer	Canadian White Snow Goose Down (100% Down)	3	185.00	270.00	315.00	365.00
Mid-Season	Canadian White Snow Goose Down (100% Down)	9	240.00	345.00	425.00	475.00
Winter	Canadian White Snow Goose Down (100% Down)	13.5	310.00	450.00	555.00	620.00

Premier Down Collection by Brinkhaus (100% Down)

Summer	“Crystal” Premier New White Hungarian Goose Down	4	195.00	295.00	350.00	415.00
Mid-Season	“Pearl” Premier New White Hungarian Goose Down	8	245.00	355.00	425.00	495.00
Mid-Season	“Gem” Premier New White Hungarian Goose Down	10.5	325.00	480.00	595.00	655.00
Winter	“Emerald” Premier New White Hungarian Goose Down	13.5	495.00	725.00	955.00	1,095.00
All Seasons	“All Seasons” New White European Goose Down	9+ 4.5	350.00	545.00	710.00	795.00

Bauschi Lux - Superior Man Made Fibre by Brinkhaus (Hypoallergenic)

Light Summer	“Bauschi Lux” Can fasten with 10.5 tog to form 14.5 tog	4.0	105.00	160.00	199.00	215.00
Summer	“Bauschi Lux” Soft and Supple - “Medium” - Circular Stitching	6.5	125.00	160.00	199.00	240.00
Mid-Season	“Bauschi Lux” Soft and Supple - “Warm” - Circular stitching	10.5	135.00	215.00	235.00	270.00

Natural Filled Pillows		Standard 75 x 50 cm	Extra-wide 90 x 50 cm	Continental 65 x 65 cm
Surrey Down <i>Home Range</i>	White Duck Feather (70%) and Down (30%)	22.00	28.00	26.00
	White Goose Feather (85%) and Down (15%)	29.00	35.00	32.00
	Down Surround (Firm Feather Core with soft Down Surround)	50.00		
	White Duck Down (70% Down, 30% Feather)	75.00	95.00	80.00
	White Goose Down (80% Down, 20% Feather)	120.00	160.00	125.00
Surrey Down <i>Premier Range</i>	Hungarian White Goose Down (90% Down, 10% Feather)	145.00	170.00	
	Canadian White Goose Down (100% Down)	180.00	210.00	

Surrey Down are also able to custom-make sizes in pillows - please enquire.

Brinkhaus	Pyrenean Duck Feather (85%) and Down (15%)	54.00	65.00	60.00
	Pyrenean Duck Down (50%) and Feather (50%)	82.00	99.00	
	Luxury Down Surround (Firm Core with a Soft Surround) 85% Goose Feather/15% Goose Down Core 90% New Goose Down Surround	82.00	99.00	
	“Gem” Finest Hungarian Goose Down	155.00	195.00	
	“Emerald” Hungarian Goose Down - Baffle Edge	175.00	215.00	

Synthetic Fibre Pillows

With excellent modern fillings, these pillows they have a natural feel and maintain their shape. They are also washable and hypo-allergenic.

Brinkhaus	Bauschi Polyester Pillow	54.00	60.00	60.00
	Bauschi Lux Baffle Edge	72.00	82.00	

Mattress Protectors		Special covers to enhance the life of your mattress. Some have added protection against dustmites. They are all washable.			
		Single 90 x 190 cm	Double 135 x 190 cm	Kingsize 150 x 200 cm	Emperor 180x 200 cm
Fogarty	Wool Filling Naturally breathable with quilted cotton top Suitable for tumble dryer. 11” Box	75.00	92.00	115.00	135.00
Grosvenor	Cotton Quilted 100 % Cotton. Luxurious percale cotton cover and natural cotton filling 11” Box	42.00	55.00	64.00	72.00
Beldorm	Waterproof Cotton Quilted (Also available in 4ft width) 15” Box	32.00	42.00	49.00	58.00
Brinkhaus	Morpheus Dustmite Zipped to completely enclose mattress Generous 12” to 14” Box	115.00	135.00	190.00	199.00

Divine Dreams “Seventh Heaven” Linen

made by and exclusive to Divine Dreams

For over 30 years our finest quality bed linen has been very popular due to its classic style, easy-care and lasting quality. At our Chirk Mill site we custom-make linen to order, in regular and unusual sizes. The classic designs are compatible with many bedroom styles. You can opt for a plain, neutral look or have trimming with satin ribbon and Nottingham lace. The fine percale cotton/polyester (50/50) is available in either white or cream.

Pillowcases, per pair	Standard 75 x 50cm	Extra-Wide 90 x 50cm	Continental 65 x 65cm	Drapes for Four Poster Beds Half Tester Beds & Coronas In cream or white muslin, decorative voiles or fine percale cotton/polyester <i>Price on Application</i>
Plain	23.00	25.00	25.00	
Classic Ribbon Only	32.00	42.00	42.00	
Classic Lace & Ribbon	35.00	45.00	45.00	
Friiled Lace & Ribbon	60.00	68.00	68.00	

Bolster Cases	Single 3ft Beds	Standard Double 4ft 6in Beds	King-size 5ft Beds	Super-King 6ft Beds
Plain H'wife or tubular	23.00	25.00	27.00	29.00
Classic Tubular, lace & ribbon edging	30.00	33.00	35.00	37.00

Duvet Covers	Single 140 x 200cm	Standard Double 200 x 200cm	King-size 230 x 220cm	Super-King 260 x 220cm
Plain	60.00	76.00	88.00	105.00
Classic Ribbon Only	90.00	105.00	120.00	140.00
Classic Lace & Ribbon	95.00	110.00	125.00	150.00
Friiled Lace & Ribbon	138.00	165.00	220.00	240.00

Sheets	Single 3ft & 3ft 6in Beds	Standard Double 4ft & 4ft 6in Beds	King-size 5ft Beds	Super-King 5ft 6in & 6ft Beds
Plain Flat or Fitted	33.00	39.00	45.00	52.00
Top Sheet with Lace & Ribbon	48.00	58.00	68.00	75.00

**Bespoke
Linen Service**

Seventh Heaven
easycare bed linen is
available in any size
you wish.
We are able to make
bespoke sheets,
duvet covers, etc.
in our workshops
in Wales to your
specifications.
Please Enquire

Valances come in two styles, gathered or flat:

- 1. Gathered Valances** can be either plain or with lace and ribbon, and either split-fronted for a bedstead or non-split for a divan.
- 2. Flat Valances** can also be either split-fronted for a bedstead or non-split for a divan. These have pleats in the centre of the strips.

When ordering a valance please state the drop from top of base to floor.

Valances	Single 3ft & 3ft 6in Beds	Standard Double 4ft & 4ft 6in Beds	King-size 5ft Beds	Super-King 5ft 6in & 6ft Beds
Plain Double Fabric Gathered or Flat Valance	75.00	85.00	90.00	105.00
Lace & Ribbon Double Fabric Gathered or Flat Valance	99.00	110.00	120.00	130.00
Bed Base Cover Plain, Fitted	55.00	69.00	79.00	86.00

Bed Base Covers

These are ideal if you
do not require a
valance, but would
like a tidier appearance
for the bed base.
When ordering a bed
base cover please give
the depth of the base.



Cream Seventh Heaven Linen

Classic Design on duvet cover,
front pillowcases & bolster case.
Frilled Design on back pillowcases.
Lace & Ribbon double fabric for the valance.

White Seventh Heaven Linen

Classic Design on front pillowcase.
Plain Design on back pillowcase.



Ribbon Only Design

Mauve ribbon on cream linen.
Other colours are available. Please enquire.



Ribbon Only Design

Cream ribbon on cream linen

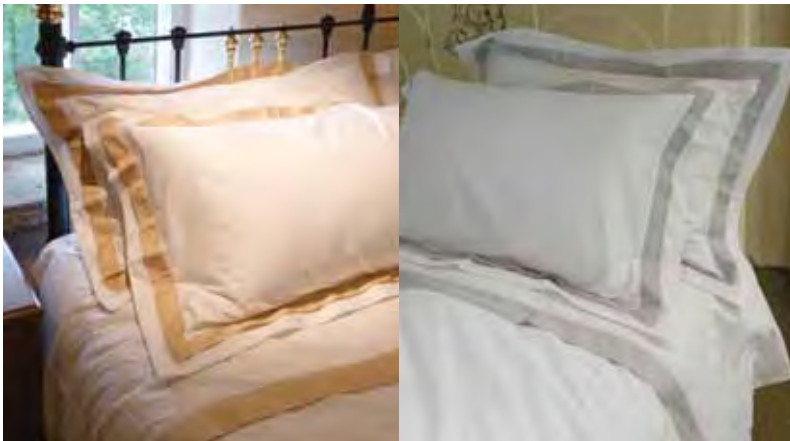
Divine Dreams Cotton Collection



Classic

Percal cotton, 220 thread count
in a wide range of colours

	Single	Double	King	Super King
Fitted Sheets	27.00	33.00	35.00	39.00
Duvet Covers	39.00	64.00	69.00	74.00
Per Pair	Standard	Ex. Wide	Cont.	
Pillowcases	30.00	34.00	34.00	



Trieste

Percal cotton with a 420 thread count,
in white with gold or cream hemstitch band

	Single	Double	King	Super King
Fitted Sheets	39.00	49.00	59.00	69.00
Duvet Covers	72.00	95.00	105.00	115.00
Per Pair	Standard	Ex. Wide	Cont.	
Pillowcases	45.00	52.00	52.00	



Chambray

Percal cotton with a 230 thread count,
in pink, blue, lavender and taupe with a stripe design

	Single	Double	King	Super King
Fitted Sheets	39.00	49.00	59.00	69.00
Duvet Covers	62.00	85.00	89.00	99.00
Per Pair	Standard	Ex. Wide	Cont.	
Pillowcases	32.00	36.00	36.00	

Verona

Drawn thread ladder work detail
in luxury percale cotton with a 220 thread count

	Single	Double	King	Super King
Duvet Covers	62.00	84.00	94.00	110.00
Per Pair	Standard	Ex. Wide	Cont.	
Pillowcases	36.00	39.00	39.00	



Fleur

Percale cotton with a 220 thread count,
in cream or white with embroidered tulip design

	Single	Double	King	Super King
Duvet Covers	76.00	98.00	110.00	125.00
Per Pair	Standard	Ex. Wide	Cont.	
Pillowcases	39.00	46.00	46.00	



Portia

Percale cotton with a 220 thread count,
in cream or white with embroidered design

	Single	Double	King	Super King
Duvet Covers	45.00	65.00	69.00	79.00
Per Pair	Standard	Ex. Wide	Cont.	
Pillowcases	33.00	35.00	35.00	





Venice

Heather or seafoam leaf design applique
on white cotton sateen with a 300 thread count.

	Single	Double	King	Super King
Duvet Covers	66.00	92.00	105.00	115.00
Per Pair	Standard		Cont.	
Pillowcases	39.00		42.00	



Torino

White cotton sateen with a 300 thread count
with piped inset border in three colours.

	Single	Double	King	Super King
Duvet Covers	59.00	79.00	99.00	110.00
Per Pair	Standard		Cont.	
Pillowcases	38.00		42.00	



Laura

White combed cotton with a 200 thread count
with broderie anglaise border.

	Single	Double	King	Super King
Duvet Covers	59.00	79.00	89.00	99.00
Per Pair	Standard		Cont.	
Pillowcases	37.00		39.00	

Cabana

Stylish striped bed linen made from yarn dyed cotton

	Single	Double	King	Super King
Duvet Covers	75.00	89.00	99.00	N/A
Per Pair	Standard	Ex. Wide	Cont.	
Pillowcases	22.00	N/A	N/A	



Celeste

Luxurious linen mix fabric with an elegant triple edge border

	Single	Double	King	Super King
Linen Set of Duvet Cover and 2 Pillow Cases	N/A	165.00	180.00	199.00



Lille

A classic design in a pale pink cotton background, finished with a piped border

	Single	Double	King	Super King
Linen Set of Duvet Cover and 2 Pillow Cases	N/A	75.00	85.00	N/A



Francesco Calvidini Fine Italian Bed Linen

Francesco Calvidini believes it is essential to use high thread counts to create a superb look and an amazing feel to their bed linen. Calvidini's range is beautifully hand stitched and made with the highest quality long staple Egyptian cotton, which is spun, woven and finished in Italy. These individually designed, exceptional fabrics use up to 1000 threads per square inch. With the higher thread counts a much thinner, finer yarn is used to give a

more sensual feel, with a surprisingly light fabric.

All bed sizes are available and in special cases the bed linen can be made to suit your specific measurements.

Calvidini bed linen is renowned to be luxurious and exclusive, is admired for its quality of workmanship and, most of all, is heaven as you drift off to sleep.

Ravello

Fine Egyptian cotton sateen with a 300 thread count in a wide range of colours, with a single piped edge.



Ravello Diamond Quilted Bedspread

	Single	Double	King	Super King
Duvet Covers	165.00	185.00	195.00	220.00
Top Sheets	110.00	120.00	130.00	140.00
Fitted Sheets (15" Box)	80.00	88.00	90.00	100.00
	Standard	Ex Wide	Continental	
Oxford Pillowcases (Per Pair)	100.00	120.00	120.00	
Cambridge Pillowcases (Per Pair)	70.00	80.00		
Diamond Quilted Bedspread in all colours shown	Double		King	Super King
	325.00		345.00	375.00



Roma

Fine 300 thread count 100% Egyptian cotton bed linen
with coloured borders. Compatible with Ravello.

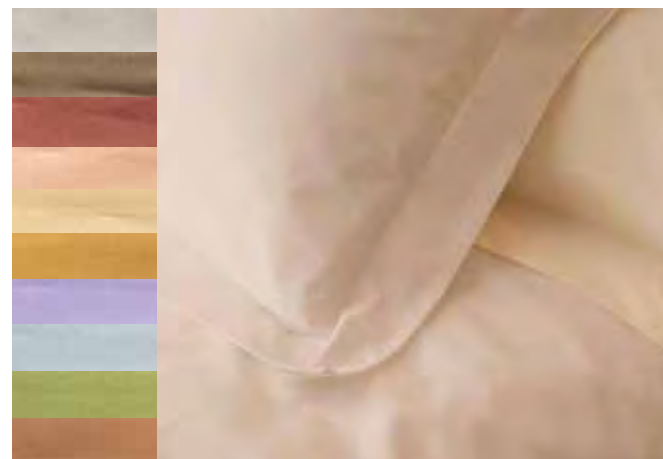
	Single	Double	King	S. King
Duvet Covers	190.00	220.00	230.00	260.00
Top Sheets	120.00	140.00	150.00	160.00
Fitted Sheets	80.00	88.00	90.00	100.00
	Std Cambridge	Std Oxford	Ex-Wide Cambridge	Ex-Wide Oxford
Pillowcases The Pair	100.00	135.00	110.00	160.00



Pisa

Luxurious top of the range bed linen with a 600 thread count.
Classical simplicity in a wide range of colours (some shown here).

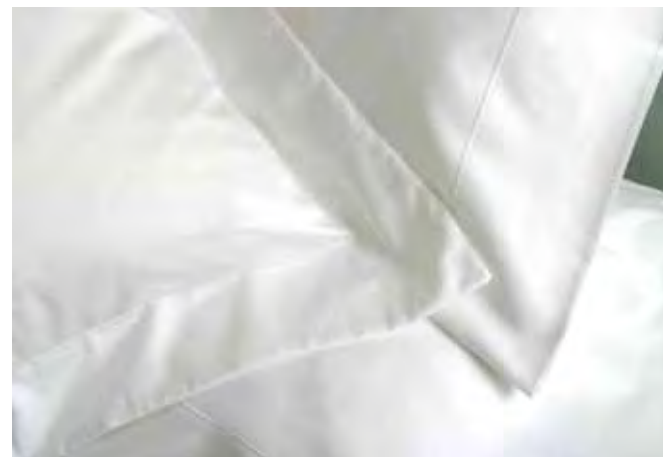
	Single	Double	King	Super King
Duvet Covers	245.00	265.00	295.00	345.00
Top Sheets	150.00	170.00	190.00	215.00
Fitted Sheets	125.00	140.00	145.00	155.00
	Std Cambridge	Std Oxford	Ex-Wide Cambridge	Ex-Wide Oxford
Pillowcases The Pair	90.00	150.00	100.00	170.00



Ultimille

Absolute luxury with a 1000 thread count fine woven
100% Egyptian cotton sateen bed linen in ivory, white or panna.

	Single	Double	King	Super King
Duvet Covers	545.00	595.00	695.00	795.00
Top Sheets	375.00	425.00	475.00	495.00
Fitted Sheets	275.00	315.00	325.00	350.00
	Std Cambridge	Std Oxford	Ex-Wide Cambridge	Ex-Wide Oxford
Pillowcases The Pair	190.00	300.00	220.00	340.00



Luxurious Quilts



Amalfi Smoke

Double (240x240cm) : £315 King (260x260cm) : £375
Cushion (45x45cm) : £41.00



Hydrangea Mauve

Double (240x240cm) : £315 King (260x260cm) : £365
Cushion (30x45cm) : £30.00 Cushion (40x40cm) : £33.00



Paris Stone

Double (240x240cm) : £340 King (260x260cm) : £400
Cushion (50x50cm) : £45.00



Paris Duck Egg

Double (240x240cm) : £340 King (260x260cm) : £400
Cushion (50x50cm) : £45.00



Hydrangea Azure

Double (240x240cm) : £315 King (260x260cm) : £365
Cushion (30x45cm) : £30.00 Cushion (40x40cm) : £33.00



Amalfi Celadon

Double (240x240cm) : £315 King (260x260cm) : £375
Cushion (45x45cm) : £41.00



Tussar Birch

Double (240x240cm) : £290 King (260x260cm) : £340
Cushion (30x45cm) : £30.00 Cushion (45x45cm) : £33.00



Tussar Azure

Double (240x240cm) : £290 King (260x260cm) : £340
Cushion (30x45cm) : £30.00 Cushion (45x45cm) : £33.00

Traditional Patchwork Quilts



Stamp Pastels

Divine Dreams has a large collection of superb quality handmade patchwork quilts, which are 100% cotton. These are ethically sourced in India and the manufacturer follows strict trade guidelines.

For a more comprehensive selection of patchworks please view our website, or pay us a visit at Chirk Mill.

100% Cotton Patchwork Quilts (including Simple Blocks, Zig Zag, Homespun Magic and Stamp)

Single	(165x228cm) :	£155
Double	(218x244cm) :	£215
King	(254x280cm) :	£245
Cushion	(46x46cm) :	£ 30



Stamp Terracotta



Homespun Magic



Homespun Pastels



Simple Blocks



Zig Zag Pastels



Patch Magic

Divine Dreams Bedspread Collection



Wild Rose

Single (193x264cm): £85.00 Double (243x264cm) : £105.00
King (264x264cm) : £115.00 Cushion: £15.00



Elisha

Single (193x264cm): £115.00 Double (243x264cm) : £145.00
King (264x264cm) : £155.00 Cushion/Sham: £15.00



Desiree

Double (243x264cm) : £125.00 King (264x264cm) : £135.00
Super King (298x264cm) : £149.00 Cushion/Sham: £15.00



Apple Patch

Single: £95.00 Double : £115.00
King: £130.00 Super King: £155.00 Pillow Sham: £15.00



Orleans

Single (193x264cm): £95.00 Double (243x264cm): £120.00
 King (264x264cm): £135.00 Cushion/Sham: £15.00



Boho

Small Single (160x210cm): £75.00
 Small Double (220x240cm): £120.00 Cushion (45x45cm): £15.00



Elaina

Double (243x264cm): £125.00 King (264x264cm): £135.00
 Cushion (40x40cm): £16.00 Pillow Sham (50x76cm): £16.00



Alice

Single (170x220cm): £69.00 Double (240x260cm): £99.00
 King (280x260cm): £115.00 Cushion (48x48cm): £20.00



Arlington Stone

Double (243x264cm) : £150.00 King (264x264cm) : £165.00
 Cushion (40x40cm) : £16.00 Pillow Sham (50x76cm) : £16.00



Carina

Double (243x264cm) : £125.00 King (264x264cm) : £135.00
 Cushion: £15.00 Pillow Sham: £15.00



Boats and Kites

Single (193x198cm): £110.00
 Cushion (40x40cm): £15.00 Pillow Sham (50x76cm): £15.00



Angel

Single (193x198cm): £99.00 Cushion (40x40cm): £15.00



Leonora

Single (180x250cm) : £185.00

Double (240x260cm) : £235.00

King (270x270cm) : £260.00

Cushion (30x45cm) : £25.00

Cushion (40x40cm) : £26.00



Naples

Single (193x264cm): £105.00

Double (243x264cm) : £125.00

King (264x264cm) : £135.00

Cushion/Sham: £16.00



Arlington Blush

Throw (152x203cm) : £74.00

Cushion (40x40cm) : £16.00

Pillow Sham (50x76cm) : £16.00



Havana

Single (193x264cm): £105.00

Double (243x264cm) : £120.00

King (264x264cm) : £130.00

Super King (298x264cm) : £140.00

Cushion/Sham: £16.00

Blankets, Throws and Cushions



Waffle Blanket

Available in white or ivory

Single	(180x230cm) :	£ 52
Double	(230x230cm) :	£ 68
King Size	(250x230cm) :	£ 74
Super King	(275x230cm) :	£ 84



Duchess Blanket

Pure Merino wool bound on all sides with a wide satin ribbon

Single	(185x230cm) :	£ 149
Double	(230x255cm) :	£ 199
King Size	(255x280cm) :	£ 249
Super King	(280x305cm) :	£ 299



Tibetan Blankets and Throws

100% Pure Tibetan wool in a large selection of colours

King Throw	(220x130cm):	£ 295
Super King Throw	(250x130cm):	£ 325
Double Blanket	(230x260cm):	£ 495
King Size Blanket	(260x260cm):	£ 545
Super King Blanket	(300x260cm):	£ 595



Cashmere Blankets

100% Pure cashmere wool - the ultimate in luxury

King Throw	(220x130cm):	£ 995
Super King Throw	(250x130cm):	£ 1,395
Double Blanket	(230x260cm):	£ 1,945
King Size Blanket	(260x260cm):	£ 2,200
Super King Blanket	(300x260cm):	£ 2,450



Down Filled Blankets (1.5 tog down)

An alternative to wool blankets with a satin edge

Single: £55.00

Double: £68.00

King Size: £84.00

Super King Size: £98.00



Throws

We have a collection of affordable throws - please enquire.



Cushions Galore

Divine Dreams always have a large selection of scatter cushions for the bedroom.

Divine Dreams Delivery Service



Divine Dreams provides a full nationwide delivery service. We arrive promptly within a 3 hour time slot and assemble all items in your bedroom. The Divine Dreams delivery teams are our ambassadors on the road and are all very helpful and courteous.

We have the experience and patience to negotiate any difficult access within your home, for example a tight staircase. Please inform us of any challenges we might encounter beforehand. In extreme cases we can provide beds that dissassemble completely. Please enquire.

We normally offer a very swift nationwide delivery service, generally within 2 to 6 weeks of purchase. However, for urgent requirements, if all the items are in stock, we can often dispatch extremely quickly, as soon as you need them.

Guide To Delivery Prices					
Wales		Cumbria	120.00	Somerset	125.00
		Derbyshire	80.00	Staffordshire	65.00
Anglesey	75.00	Devon	140.00	Suffolk	125.00
Camarthenshire	95.00	Dorset	130.00	Surrey	125.00
Ceredigion	75.00	Durham	140.00	Sussex	140.00
Conwy	65.00	Essex	125.00	Tyne and Wear	140.00
Denbighshire	55.00	Gloucestershire	90.00	Warwick	80.00
Flintshire	60.00	Hampshire	125.00	Wiltshire	110.00
Gwent	85.00	Hereford & Worcs.	75.00	N. Yorkshire	120.00
Gwynedd	60.00	Hertfordshire	95.00	S. Yorkshire	90.00
Pembrokeshire	115.00	Humberside	125.00	W. Yorkshire	90.00
Powys (North)	55.00	Kent	140.00	Scotland <i>Depending on region</i>	175.00 to 350.00
Powys (South)	65.00	Lancashire (N)	90.00		
South Wales	95.00	Lancashire (S)	70.00		
Wrexham	45.00	Leicestershire	90.00	Northern Ireland & Eire <i>Price on Application</i>	
England		Lincolnshire	125.00		
		London	125.00		
Avon	95.00	Manchester	70.00	Channel Islands <i>From £250 Upwards - Price on Application</i>	
Bedfordshire	95.00	(West) Midlands	75.00		
Berkshire	95.00	Norfolk	125.00	Worldwide Shipping All quotes are arranged separately. We have dealt for many years with a number of reputable shippers who specialise in handling antiques and we can arrange some very reasonable quotes.	
Buckinghamshire	95.00	Northampton	90.00		
Cambridgeshire	115.00	Northumberland	150.00		
Cheshire	55.00	Nottinghamshire	90.00		
Cleveland	140.00	Oxfordshire	90.00		
Cornwall	150.00	Shropshire	50.00		

Courier Service

For single items such as boxes of linen, bed bases and lighter mattresses we offer a carrier service through a reputable courier. This often proves a more affordable option to delivery areas further afield from North Wales.

Our courier does not offer the full Divine Dreams delivery service. They deliver to your door and may require assistance unloading.

All quotes are dealt with separately, as they are determined by weight, volume, distance travelled and delivery time. Please enquire for exact details, but as a guideline, the average charge for large items, such as bed bases or lighter mattresses, is £65.00 on a 3-day courier service nationwide.

Removal of Existing Base and Mattress

We offer a service to remove your existing base and mattress, when delivering your new bed in our own vehicles.

Either mattress or bed base individually: **£30.00**

Both mattress and base: **£50.00**

Postage & Packing to England & Wales (Scotland and Ireland quoted separately)

Bed Linen only, up to £75.00 value	£5.00 to £10.00 Postal Service
Bed Linen over £75.00 value, and All Bedding, Quilts and Throws.	£15 to £20.00 3 Day Service £35.00 Next Day Service

Payment Details

For all large items we require a minimum deposit of 20%. The balance of payment is due 4 weeks after date of order, or as soon as goods are ready for despatch.

If we are restoring a bed for you, we require a minimum deposit of 30%. Once the work has been approved, by photograph or by viewing, the balance is payable before delivery.

All balances need to be cleared prior to delivery.



After Sales Service

We are sure your purchase will be highly satisfactory. However if you encounter any problems or have any queries please do not hesitate to contact us. We deal with such situations promptly. If we cannot solve your problem and you are one of the very few who are totally unhappy with our goods or service, you have the right to a full cancellation as per your statutory rights. We will not hold you to your purchase.

All Divine Dreams customers should sleep soundly in their beds!

Wherever possible we source our products from Britain and Europe. When buying other items world wide, we endeavour to source from reputable firms who believe in good working practices and in the Fair Trade ethic.

All the information in this brochure is given in good faith, but the items and/or prices are subject to availability or change.

Each item is priced including VAT

Divine Dreams Bed Restoration Services



If your antique bed isn't quite as sturdy as it should be or if it is the wrong length and width then our bed restoration service can help.

Our full renovation service restores your own bed to our high standards reviving it to its former glory and making the bed functional for the modern mattresses and bases.



Our Metal Bed Restoration Includes:

- Re-structuring with new side runners and fittings
- Lengthening for the modern base and mattress sizes
- Widening, for example to king size or super king size
- Repolishing brass work, removing old lacquer if necessary
- Replacing damaged parts or fixing if possible
- Shot blasting and repainting in a colour of your choice

Our Wooden Bed Restoration Includes:

- Re-structuring with new side runners and fittings
- Lengthening for the modern base and mattress sizes
- Restoring the finish if required
- Recarving parts or fixing if possible
- Reconstructing four poster beds in the traditional style around customers own antique posts

Website, E-Mail & Mail Order



The Internet is an invaluable tool in viewing a large selection of our current stock. Although we always recommend you visit Chirk Mill if you can, our website is comprehensive and increasingly many customers are happy to use it as our shop front.

This brochure is able to explain in great detail all aspects of our products, but it can only give an indication of general styles and sizes because our actual stock is continually changing. Our antique beds are unique and the Divine Dreams website is the only way we can illustrate a good cross-section of beds available.

Also many of the quilts and bed covers are produced on very small runs and their designs change from season to season. The website is ideal for viewing up-to-date stock and comparing the looks and colours of our range.

If you cannot find inspiration on-line then please get in touch. Our sales team are sure to direct you to alternatives. We can send photographs and descriptions of other options by e-mail. Or if you would prefer information and quotes by post that is not a problem.

We have over 25 years experience dealing mail order and thousands of satisfied customers

Discovering Divine Dreams

Chirk Mill is the centre for Divine Dreams. Once an active flour mill, it now houses one of the finest collection of restored antique beds in the country, along with all you need for a quality night's sleep.

Situated on the border of Wales and England, Chirk Mill lies within a beautiful setting. A visit is well worthwhile, and easily combines with a superb day out. There is an excellent garden centre half a mile away and the renowned National Trust property, Chirk Castle is a short drive.

If you would like to stay overnight we can offer advice on Hotel or Bed & Breakfast accommodation. Please call us.

How To Find Us

By Road:

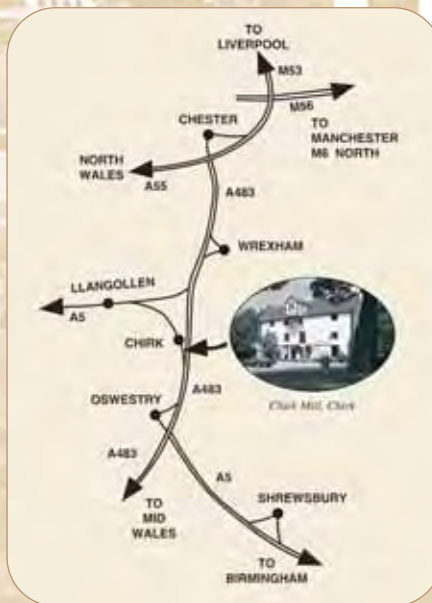
We are in a good central location, linked to the motorway network via **Chester and Shrewsbury**. The **A5** bypasses the village of **Chirk**, and Chirk Mill lies on the **B5070**. If you are travelling from the **Chester area**, follow the signs towards **Oswestry** until you reach the sign for **Chirk**.

By Rail:

Our local train station is half a mile away, with excellent links to Chester, Shrewsbury, Birmingham and London. We can provide a pickup service to and from the station if you contact us in advance.

By Canal Boat:

The aqueduct across the road holds one of the most popular waterways in Europe. The Llangollen Canal boasts scenic beauty and breathtaking engineering in equal measure.



There is ample car parking space at:

Chirk Mill, Chirk, LL14 5BU.

Tel: 01691 777622

We are open 7 days a week.

Mon. - Sat. 9am. to 5.30pm.

Sunday 10am. to 4pm.





CHIRK MILL
CHIRK
WREXHAM
NORTH WALES
UNITED KINGDOM
LL14 5BU

Open 7 days a week
Mon-Sat 9am to 5.30pm
Sun 10am to 4pm

Tel: (01691) 777622
sales@divinedreams.co.uk

www.divinedreams.co.uk

This brochure was designed entirely in-house.
This brochure is © Divine Dreams Limited

